



# New Intake Booklet



# Welcome

# Contents

- The Greetland Academy Vision Statement & message from the Chief Executive Officer, Principal and Chair of Governors
- Learning in Reception
- A Typical School Day
- School Times, Absences, Holidays and Parking
- Parent Participation, Seesaw, Keeping Informed
- School Dinners, Water, Milk, Snacks
- School Uniform, Breakfast Club, Arbor
- Starting School & Preparation

## Getting in touch

Key Stage 1 Site:

Reception, Year 1 and Year 2 are based  
Saddleworth Road, Greetland, HX4 8LZ

01422 372893

[ks1@greetlandacademy.org.uk](mailto:ks1@greetlandacademy.org.uk)

Key Stage 2 Site:

Year 3 - Year 6 are based  
School Street, Greetland, HX4 8JB

01422 372893

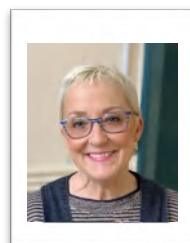
[ks2@greetlandacademy.org.uk](mailto:ks2@greetlandacademy.org.uk)

# The Greetland Academy Vision Statement

The Greetland Academy strives to always provide an inspirational, positive and welcoming environment where there is a sense of pride and fun and where everyone works together with confidence, enthusiasm and mutual respect. We aim to nurture academic, personal, spiritual and social development in a caring and professional manner so that all achieve their full potential and all can reach great heights.



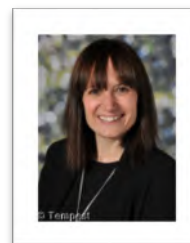
## A MESSAGE FROM THE CHIEF EXECUTIVE OFFICER, PRINCIPAL AND CHAIR OF GOVERNORS



Peta Cocker  
Chair of Governors



Amanda Bennett  
Chief Executive



Helen Crowther  
Principal

As Chief Executive Officer, Principal and Chair of the Governing Body of The Greetland Academy we wish to welcome you to our school family. The Greetland Academy is very fortunate to have both an extremely skilled and dedicated team of staff as well as interested and supportive parents. We value the importance of strong links with our families as a means of ensuring we have a creative and challenging environment in which all of our children can shine. Our Academy newsletters, parents' showcase afternoons, curriculum evenings, principal's message, website, Facebook page and text messaging service are all designed to make you, as parents and carers, aware of all the news and developments within the Academy. Our main vehicle for ensuring strong home-school links is the use of the app Seesaw. This is an online learning journal for your child where you will be able to see and comment on what they have been doing in class. If at anytime in the future you require clarification of a specific issue or question a new development, please contact the school with your query. This booklet, along with the New Intake afternoon session, is designed to provide you with the information required before your child starts at The Greetland Academy.

Yours sincerely,

Mrs Peta Cocker,

Chair of Governors

Mrs Amanda Bennett,

Chief Executive Officer

Mrs Helen Crowther,

Principal



# Learning in Reception

During the Reception year the children will be learning through structured adult-led activities and play. The play within the classroom and outdoor learning environment is both challenging and fun and it helps children develop a positive attitude towards learning for the rest of their school life.

The children will have daily Phonics and Maths focus sessions which build over time in length and independence as we work towards Year 1. Phonics teaching is currently taught using 'Little Wandle Letters & Sounds Revised' synthetic phonics programme. As part of this, children will read with an adult in school three times a week.

The children will engage in a range of different activities related to broad topics and inspired by books. Some of these activities will take place in large groups, some in smaller groups and some individually. There will be a mix of adult led and child-initiated activities.

There are seven areas of learning that shape the Early Years Curriculum. All areas of learning and development are important and inter-connected. The three prime areas are particularly crucial for igniting children's curiosity and enthusiasm for learning, and for building their capacity to learn, form relationships and thrive. The three prime areas are:

- Communication and Language
- Physical Development
- Personal, Social and Emotional Development.

There are four specific areas through which the three prime areas are strengthened and applied. The specific areas are:

- Literacy
- Mathematics
- Understanding of the World
- Expressive Arts and Design



# A typical school day

8.40	The entrance gates are open and children make their way down the path into their classrooms.
8:45	School Starts, children complete a morning work tasks.
9:00	Register
9:05	Whole class phonics session. Plus reading in groups three times a week.
9:30	The children are able to explore & play both inside and out with a range of resources and activities. A focused adult-led Phonics or Maths activity will be set up which all children will complete at some point in the morning session.
10:30	Milk, Snack & Storytime
10:45	Continue their learning in Phonics or Maths, accessing the resources & environment.
11:35	Tidy up time, wash hands for lunch and discuss/ share learning from the morning.
11:45	Children have lunch and play outside when they have finished. While Reception staff are on lunch, the children are facilitated by Midday Supervisors.
12.45	Afternoon Registration. The children complete a fine motor activity such as dough disco, this is followed by a handwriting or pencil control task
13:10	Children have another carpet input session. This can be focused around Maths, Understanding of the World or Expressive Art & Design; these sessions are flexible depending on the learning.
13:20	The children are able to explore & play both inside and out. A focused adult-led investigation or creative activity will be set up which all children will complete at some point in the afternoon session.
15:00	Story time
15:15	Parents collect children at the door of the classroom.





# School Times

At KS1 the school day starts at 8.45am. The entrance gate will be opened at 8:40 am children, accompanied by an adult, walk down the path and make their way to their designated door. Staff will be around to support and welcome children into school. The gate will close at 8:55am. Any late arrivals need to be dropped off at the office, this is accessed by coming down the driveway. At home time the entrance gate is opened at 3.10pm and children will be let out of class at 3.15pm. Could we please remind parents that for safety reasons children should not be allowed on the grassed areas or walls.



## Absenses

If your child is ill please notify school by 9:30am. This can be by either telephone (01422 372893), by email ([ks1@greetlandacademy.org.uk](mailto:ks1@greetlandacademy.org.uk) or [ks2@greetlandacademy.org.uk](mailto:ks2@greetlandacademy.org.uk)) or another adult in person. If school do not have contact by 9:30am then we follow the 'First-Day Call Procedure' which can be found [here](#) on our website.

Sickness - 48 hour rule - if your child is suffering from sickness or diarrhoea they need to be clear of symptoms for 48 hours before returning to school.

## Holidays

Dates are published on the website [here](#) and a annual postcard calendar is sent out. Headteachers may not grant any leave of absence during term time unless there are exceptional circumstances. For full details of our [attendance policy](#) please visit the Academy website.

## Car Parking

You will appreciate that at the start and close of the children's school day, there is considerable congestion on the roads at both of our school sites. The police have requested that parking should be on only one side of the road and great care should be taken to reduce the risk of accidents. Allowing yourself five minutes extra in the morning would mean that all cars could be parked well away from the school, giving you and your child the opportunity to enjoy a healthy walk for the last few hundred yards. Under no circumstances should cars wait on or opposite the yellow zig-zag lines in school hours. Please remember the school car park is for staff. If you hold a disability badge and require support with access to the premises, please contact the school office.



# Parent Participation

At The Greetland Academy, we hold regular whole school events which the children really enjoy and we encourage families to be involved; highlights include the Halloween disco and Summer Fayre. The Greetland Academy Parent and Teacher Association (PTA) is known as FOGS (The Friends of Greetland School). They plan events and activities throughout the year to raise funds for the school which benefit all pupils.

To become a member of FOGS or to find out more visit the [website](#) or contact [FOGS@greetlandacademy.org.uk](mailto:FOGS@greetlandacademy.org.uk)



Easter Bonnet Parade



World Book Day



Pumpkin Decorating Competition

## Seesaw



At the Greetland Academy we use an app called Seesaw throughout school as an interactive learning platform. It is a simple way for teachers and pupils to record and share what's happening in the classroom. Seesaw gives pupils a place to document their learning, be creative and learn how to use technology. Each child gets their own online journal which follows them up through school. Children are encouraged to take ownership of their learning, they will add and create photos, videos, drawings, or presentations independently. When there are new Seesaw posts, families can be notified via app notification, email or SMS. Parents are only notified about their own child's work, and all data is safe and secure.

## Keeping Informed

To ensure parents are kept informed of up and coming events, a calendar on our website shows all our diary events. Where possible we limit sending home paper letters, we do post these on Seesaw as well as publish them on the website, so it is worth checking our web page at regular intervals to keep yourself informed.

We have designed '[Learning Launchpads](#)' to give parents more information about the planned learning each half-term. Please use these alongside your child's Seesaw account to stay up to date with what's going on at school and in each year group.



## School Dinners

Dinners are freshly cooked in our own kitchens. We offer choices each day, including a vegetarian option and the menus rotate over a three week cycle. Fresh fruit and bread are always available, along with water to drink. Menus are changed seasonally and information is sent home for you and your child to choose their lunch and place their order on-line via our website. If your child has any specific dietary requirements please let us know so that we can tailor a menu to suit your needs. Click [here](#) to view the school meal page on our website.

All pupils in reception, Year 1 and Year 2 in state-funded schools in England are eligible for free school meals (FSMs), this includes academies. More information regarding school meals payments will be sent to you when your child moves onto our Key Stage 2 site and into Year 3.



## Water

Children are encouraged to bring a bottle of water to school to keep well hydrated during the school day. To promote a healthy lifestyle this must be water and not juice

## Milk

Milk is available to all children at our Key Stage 1. For all our under 5's this is free. Greetland Academy will automatically register your child to receive school milk each day. When children reach their fifth birthday they can continue to receive milk as part of the CoolMilk scheme for approximately £15 per term. Click [here](#) for more information or visit <https://www.coolmilk.com>

## Snacks

At The Greetland Academy we strive to promote a healthy lifestyle. Children are offered fresh or dried fruit and vegetables, provided by a government scheme to encourage children to eat five a day.

This includes a different choice each day e.g banana, carrot, pear, apple or orange.

There is also the option of bringing your own fruit, please ensure it is fresh or dried fruit ONLY and NOT sweets made of fruit. Also that your child can peel any fruit you send with them, if not, it would be helpful to supply readily prepared choices.



**Please note we are a nut free school. As a school we have a responsibility to keep our pupils, staff and visitors safe and to reduce risk of harm. Please do not bring any products containing nuts or peanuts into school.**



# School Uniform

All the information regarding school uniform can be found [here](#) on the website.

- Trousers: plain grey school trousers
- Skirts: plain, grey knee length school skirts
- Summer: plain grey shorts or red checked summer dress
- Polo shirt: white with school logo or plain
- Sweatshirt: red, either with school logo or plain
- Socks/Tights: plain black, grey or red
- Shoes: plain, black school-type shoes
- Sun caps and winter woolly hats in red with the Academy logo are available.



## PE Uniform

Children wear their PE kits to school on their PE days.

- Red polo shirt either with school logo or plain )
- Red or black shorts
- Plain black joggers or leggings
- Pumps or trainers
- We also have an optional, red hoodie with the school logo but alternatively children can wear their school jumpers.

Uniform can be purchased from Shaw Hardcastle, 20 Commerical Street, Halifax, HX1 1TB <https://smartschoolwearcentre.co.uk/> Also other local uniform shops. Unbranded items can also be found in most supermarkets. Children should not come to school wearing fashion trainers, jeans, tracksuits, sportswear or beachwear.

## Breakfast Club

To ensure your child has a great start to the day our dedicated staff operate a [Breakfast Club](#) for our pupils. Children can choose from a variety of breakfast options as well as daily activities.

This club starts at 8am each school morning and is currently a cost of £3 a day. Places are limited and must be booked prior to attending.

## Arbor

In order to keep our parents updated with school life and any last minute changes such as closure due to snow we use a text/email service called 'Arbor' which will send a text to mobile phones or an email depending on the urgency of the message. We also use this system to accept electronic payment - where parents can pay for school dinners and trips online. On the Arbor system parents can book Parent/Teacher consultations, book tickets for performances and keep us update with any changes to personal details such as address or telephone numbers. Once your child has started school you will receive information on registration.

# Starting School

Starting school can be an exhausting business, both emotionally and physically. Despite many children attending nurseries and playgroups, the new arrangements, style and pace of teaching and learning can be a surprise to both children and parents.

Don't be upset if your child comes home feeling very tired and doesn't want to talk about the day at school. Give your child a meal, a bath, a cuddle and story, and an early bed time. Use the Seesaw app for an update on what your child has been doing.

Our staff are friendly and approachable, they will be available at the begin and end of each day or you can organise a convenient time to meet.

## Preparation

Many parents ask what we want children to be able to do before they come to school.

Here are the things which help to make the school day and routines simpler:

- I can use the toilet all by myself
- I can zip up and fasten my coat
- I can dress myself
- I can wash and dry my hands & face
- I can use a knife & fork
- I can put my own shoes on and fasten them

