



THE **GREETLAND** ACADEMY

Supporting Pupils with Medical Needs Policy

Approved by:	Helen Crowther		
Responsible department:			
Last review date:	October 2025	Last reviewed by:	Helen Crowther
Last updated:	October 2025	Last updated by:	Helen Crowther
Next review due :	October 2026		

School Aims, Vision and Implementation

Greetland Academy aims to provide children the opportunity to develop towards their full potential; academically, emotionally and socially:

- Providing the highest standard of education to enable all children equally to acquire the skills, knowledge and concepts relevant to their future.
- Promoting an ethos of care, mutual respect and support, where effort is valued, and success celebrated.
- Enabling children to become active, responsible and caring members of the school and wider community.

The school works towards these aims by:

- Promoting high quality learning and attainment.
- Providing a high quality learning entitlement and environment.
- Valuing each other and ourselves.
- Working in partnership with parents and the community.

Equal Opportunities

Our school seeks to foster warm, welcoming and respectful environments, which allow us to question and challenge discrimination and inequality, resolve conflicts peacefully and work and learn free from harassment and violence.

We recognise that there are similarities and differences between individuals and groups but we will strive to ensure that our differences do not become barriers to participation, access and learning and to create inclusive processes and practices, where the varying needs of individuals and groups are identified and met. We therefore cannot achieve equality for all by treating everyone the same.

We will build on our similarities and seek enrichment from our differences and so promote understanding and learning between and towards others to create cohesive communities.

Our school is clear about the need to actively support pupils with medical conditions to participate in school trips and visits, or in sporting activities, and not prevent them from doing so.

The school will consider what reasonable adjustments need to be made to enable these pupils to participate fully and safely on school trips, visits and sporting activities. Risk assessments will be carried out so that planning arrangements take account of any steps needed to ensure that pupils with medical conditions are included. In doing so, pupils, their parents and any relevant healthcare professionals will be consulted.

This policy has been written after reference with and support from:

Access to Education for Children and Young People with Health Needs, Supporting Pupils at School with Medical Conditions, DFE

Introduction

This policy only applies to the administering of prescribed medication to those children who would be prevented from, or restricted from, attending school on a regular basis without such intervention. It also applies to the administration of prescribed medication for children with short term illnesses whose attendance may be affected.

“The governing body must ensure that arrangements are in place to support pupils with medical conditions. In doing so they should ensure that such children can access and enjoy the same opportunities at school as any other child”. **DFE September, 2014**

Aims

As part of the ethos of our school, where we promote inclusion, it is the Trust's intention to support each child within the school to enable them to access the appropriately differentiated curriculum and therefore we do need to be prepared to support children with both short and long term medical needs and have an appropriate Healthcare Plan in place.

This policy aims to ensure that:

- Pupils, staff and parents understand how our school will support pupils with medical conditions
- Pupils with medical conditions are properly supported to allow them to access the same education as other pupils, including school trips and sporting activities

The Local Governing Board will implement this policy by:

- Making sure sufficient staff are suitably trained.
- Making staff aware of pupil's condition, where appropriate.
- Making sure there are cover arrangements to ensure someone is always available to support pupils with medical conditions.
- Providing supply teachers with appropriate information about the policy and relevant pupils.
- Developing and monitoring individual Healthcare Plans (HCPs).
- Personalised evacuation plans (PEEPs) are in place and outline individual pupil's needs.

The named person with responsibility for implementing this policy is Helen Crowther (Executive Principal).

Legislation and Statutory Responsibilities

This policy meets the requirements under Section 100 of the Children and Families Act 2014, which places a duty on LGBs to make arrangements for supporting pupils at their school with medical conditions. This policy is also based on the Department for Education's statutory guidance: Supporting pupils at school with medical conditions.

Strategies

The safe administration of medicines in school depends on the support and co-operation of all the parties connected with the child; parents, the school staff and the individual child.

Parents must:

- Provide the school with information about their child's medical condition
- Provide school with original labelled supplies of in date prescribed medication

- Complete an authorisation form allowing the school to administer the medication (see appendix 2)
- Provide information about the exact dosage and frequency.
- Encourage their children to be self-supporting, under guidance.
- Initially discuss their child's needs with the Executive Principal or the school's SLT.
- Dispose of any out of date medication.
- Not send non prescribed medication to school (*these do not need to be taken during school time as there would likely be no detrimental effects for the children concerned*). Schools may, however, agree to give non-prescription medicines at their discretion if they have specific written permission from parents.

Governors must:

- Approve a policy that enables access to school to children who have both short and long term medical needs.
- Periodically review their policy.
- Receive reports on the policy's effectiveness from the Executive Principal.
- Consider new information from the DfE and other sources in their attempt to improve this policy
- Ensure that staff have appropriate training to deal with medical conditions.
- Ensure that children are not penalised 'for their attendance record if their absences are related to their medical condition .e.g. hospital appointments' DfE Sep 2014.
- Ensure that effective health Healthcare Plans are implemented for appropriate pupils.

School Staff must:

- Only accept prescribed medicines that are in date, labelled in the original container as dispensed by a pharmacist ('Medicines in unlabelled containers will not be accepted')
- On a voluntary basis administer medication to children. NO member of staff will be made to administer medication, 'although teachers have a duty of care (in loco parentis) in the event of an accident or emergency, for the health and safety of pupils in school'.
- Ensure the safe storage of medicines brought to school (these will be kept securely in the office, not in the classroom except for medication needed in emergencies such as epi-pens and inhalers).
- Inhalers will be stored safely and accessibly within each classroom in a special storage unit. Other immediately needed medication, such as epi-pens, are stored in a red bag that the adult in the classroom wears to facilitate quick access in an emergency. If inhalers or emergency medication is administered the dose and time medication is given will be recorded on the medicine form (see appendix 3).
- Receive appropriate training from the GP, NHS school nursing team or other appropriate professionals as may be necessary.
- Maintain confidentiality about a child's medical condition, treatment and receive information on a "need to know basis."
- Will provide basic first aid (some support assistants and midday supervisors have received first aid training - the list of trained staff is displayed in numerous locations around school).
- Will contact parents or other contact person in the event of;
 - an emergency
 - missing medication

- some medical problem
- Administer only those medicines;
 - that have been prescribed by a GP
 - that the parents have authorised should be given and have provided authorisation and information regarding dose and frequency
 - that the child is prepared to take; staff should not force a child to take medication but should inform the parents of the situation immediately
- Supervise children when they take their own medication.
- remove medication from children so that it can be safely stored whilst the child remains on school premises.
- receive appropriate training to become familiar with both the symptoms and emergency action necessary for children with individual Healthcare Plans.
- return to parents out of date medication for disposal.
- sharp boxes should always be used for the disposal of needles and other sharps.
- ensure that any medication is taken for the child whilst on a school visit.

Pupils

Pupils with medical conditions will often be best placed to provide information about how their condition affects them. Pupils should be fully involved in discussions about their medical support needs and contribute as much as possible to the development of their Healthcare Plan (HCP). Pupils are also expected to comply with their Healthcare Plan.

School nurses and other healthcare professionals

The local school nursing team will notify the school when a pupil has been identified as having a medical condition that will require support in school. This will be before the pupil starts school, wherever possible. Healthcare professionals, such as GPs and paediatricians, will liaise with the school nursing team and notify them of any pupils identified as having a medical condition.

If the above policy and practice is followed by all parties concerned there would appear to be no reason why any child should be prohibited from attending our school or taking an active part in it.

Being notified that a child has a medical condition

When the school is notified that a pupil has a medical condition, the process outlined below will be followed to decide whether the pupil requires a Healthcare Plan. The school will make every effort to ensure that arrangements are put into place within 1 week (where possible), or by the beginning of the relevant term for pupils who are new to our school. See Appendix 1.

Pupil Healthcare Plans

The Executive Principal, in partnership with the SLT, has overall responsibility for the development and implementation of a HCP for pupils with medical conditions. The School Business Manager and school administrators are responsible for creating the physical HCP and communicating it to all relevant members of staff. The school will attempt to review HCP's annually, or earlier if there is evidence that the pupil's needs have changed. Plans will be developed with the pupil's best interests in mind and will set out what needs to be done, when and by whom.

Not all pupils with a medical condition will require a HCP. It will be agreed with a healthcare professional and the parents when a HCP would be inappropriate or disproportionate. This will be based on evidence. If there is not a consensus, the Executive Principal will make the final decision.

Plans will be drawn up in partnership with the school, parents and a relevant healthcare professional, such as the school nurse, specialist or paediatrician, who can best advise on the pupil's specific needs. The pupil will be involved wherever appropriate.

HCP's will be linked to, or become part of, any statement of special educational needs (SEND) or education, health and healthcare plan (EHHCP). If a pupil has SEND but does not have a statement or EHHCP, the SEN will be mentioned in the HCP.

The level of detail in the plan will depend on the complexity of the child's condition and how much support is needed. The LGB, Executive Principal and the SENDCo/SBM/school administrators (where necessary) are responsible for developing HCPs and will consider the following when deciding what information to record on the HCP:

- The medical condition, its triggers, signs, symptoms and treatments.
- The pupil's resulting needs, including medication (dose, side effects and storage) and other treatments, time, facilities, equipment, testing, access to food and drink where this is used to manage their condition, dietary requirements and environmental issues, e.g. crowded corridors, travel time between lessons.
- Specific support for the pupil's educational, social and emotional needs. For example, how absences will be managed, requirements for extra time to complete exams, use of rest periods or additional support in catching up with lessons, counselling sessions.
- The level of support needed, including in emergencies. If a pupil is self-managing their medication, this will be clearly stated with appropriate arrangements for monitoring.
- Who will provide this support, their training needs, expectations of their role and confirmation of proficiency to provide support for the pupil's medical condition from a healthcare professional, and cover arrangements for when they are unavailable.
- Who in the school needs to be aware of the pupil's condition and the support required.
- Arrangements for written permission from parents and the Executive Principal for medication to be administered by a member of staff, or self-administered by the pupil during school hours.
- Separate arrangements or procedures required for school trips or other school activities outside of the normal school timetable that will ensure the pupil can participate, e.g. risk assessments.
- Where confidentiality issues are raised by the parent/pupil, the designated individuals to be entrusted with information about the pupil's condition.
- What to do in an emergency, including who to contact, and contingency arrangements.

Controlled Drugs

Controlled drugs are prescription medicines that are controlled under the Misuse of Drugs Regulations 2001 and subsequent amendments, such as morphine or methadone. A pupil who has been prescribed a controlled drug may have it in their possession if they are competent to do so, but they must not pass it to another pupil to use. All other controlled drugs are kept in a secure cupboard in the school office and only named staff have access. Controlled drugs will be easily accessible in an emergency and a record of any doses used and the amount held will be kept.

Pupils Managing Their Own Needs

Pupils who are competent will be encouraged to take responsibility for managing their own medicines and procedures. This will be discussed with parents and it will be reflected in their HCPs. Pupils will be allowed to carry their own medicines and relevant devices i.e. inhalers, creams, wherever possible.

Staff will not force a pupil to take a medicine or carry out a necessary procedure if they refuse, but will follow the procedure agreed in the HCP and inform parents so that an alternative option can be considered, if necessary.

Unacceptable Practice

School staff should use their discretion and judge each case individually with reference to the pupil's HCP, but it is generally not acceptable to:

- Prevent pupils from easily accessing their inhalers and medication, and administering their medication when and where necessary.
- Assume that every pupil with the same condition requires the same treatment.
- Ignore the views of the pupil or their parents.
- Ignore medical evidence or opinion (although this may be challenged).
- Send children with medical conditions home frequently for reasons associated with their medical condition or prevent them from staying for normal school activities, including lunch, unless this is specified in their HCP.
- If the pupil becomes ill, send them to the school office or medical room unaccompanied or with someone unsuitable.
- Penalise pupils for their attendance record if their absences are related to their medical condition, e.g. hospital appointments.
- Prevent pupils from drinking, eating or taking toilet or other breaks whenever they need to in order to manage their medical condition effectively.
- Require parents to attend school to administer routine medication or provide medical support to their pupil, including with toileting issues. However, parents may be asked to attend school in exceptional circumstances, such as those where pupils require the administering of specialist medication or if medication needs to be administered repeatedly during the school day and school unfortunately does not have the staffing resources to facilitate this.
- Prevent pupils from participating, or create unnecessary barriers to pupils participating in any aspect of school life, including school trips, by requiring parents to accompany their child. Where necessary, a risk assessment will be created for any school trip/club with the support of the pupil's parents.
- Administer, or ask pupils to administer, medicine in school toilets.

Emergency Procedures

Staff will follow the school's normal emergency procedures (for example, calling 999). All pupils' HCP's will clearly set out what constitutes an emergency and will explain what to do. If a pupil needs to be taken to hospital, staff will stay with the pupil until the parent arrives, or accompany the pupil to hospital by ambulance.

Training

Staff who are responsible for supporting pupils with medical needs will receive suitable and sufficient training to do so.

The training will be identified during the development or review of HCPs. Staff who provide support to pupils with medical conditions will be included in meetings where this is discussed. The relevant healthcare professionals will lead on identifying the type and level of training required and will agree this with the Executive Principal. Training will be kept up to date.

Training will:

- Be sufficient to ensure that staff are competent and have confidence in their ability to support the pupils
- Fulfil the requirements in the HCP.
- Help staff to have an understanding of the specific medical conditions they are being asked to deal with, their implications and preventative measures
- Healthcare professionals will provide confirmation of the proficiency of staff in a medical procedure, or in providing medication.
- All staff will receive training so that they are aware of this policy and understand their role in implementing it, for example, with preventative and emergency measures so they can recognise and act quickly when a problem occurs. This will be provided for new staff during their induction.

Record Keeping

A list of all children with medical needs (which is updated regularly) is available from the School Business Manager. Parents will be informed if their pupil has been unwell at school. HCPs are kept in a readily accessible place which all staff are aware of.

The school will ensure that written records are kept of medicine that is administered to pupils (see appendix 3).

Liability and Indemnity

The school will ensure that the appropriate level of insurance is in place and appropriately reflects the school's level of risk.

Complaints

Parents with a complaint about their child's medical condition should discuss these directly with the SLT or Executive Principal in the first instance. If the Executive Principal cannot resolve the matter, they will direct parents to the school's complaints procedure.

Monitoring Arrangements

This policy will be reviewed and approved by the Executive Principal annually.

Links to other policies

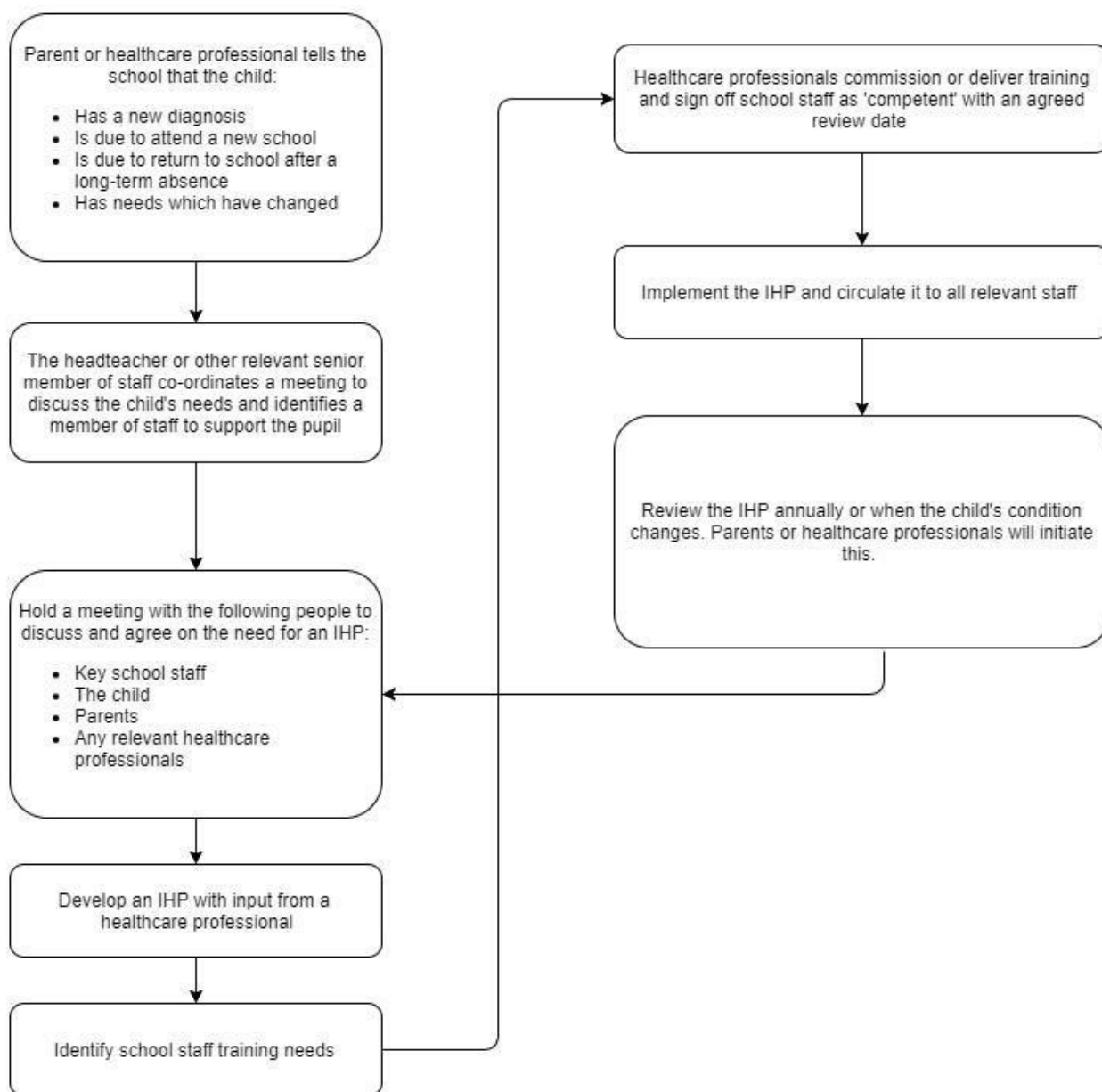
This policy links to the following policies:

- Administering Medicines Policy
- Health and Safety Policy
- Safeguarding
- SEND policy

Monitoring and Evaluation

This policy will be monitored and evaluated by the Executive Principal on an annual basis.

Appendix 1: Being notified a child has a medical condition





Appendix 2

Request to administer medicine in school

The school/setting will not give your child medicine unless you complete and sign this form, and the school or setting has a policy that the staff can administer medicine.

Name of school/setting	The Greetland Academy
Name of pupil	
Date of birth	/ /
Group/class/form/year group	
Medical condition or illness	
Medicine	
Name/type of medicine (as described on the container)	
Date dispensed	/ /
Expiry date	/ /
Agreed review date to be initiated by	
Dosage and method	
Timing	
Special precautions	
Are there any side effects that the school/setting needs to know about?	
Self administration	
Procedures to take in an emergency	.
Contact Details	
Name and Relationship	
Daytime telephone no. (essential)	
Relationship to pupil	
Address	
I understand that I must deliver the medicine personally to	

I accept that this is a service that the school/setting is not obliged to undertake.

The above information is, to the best of my knowledge accurate at the time of writing and I give consent to school/setting staff administering medicine in accordance with the school/setting policy. I will inform the school setting immediately in writing, if there is any change in dosage or frequency of the medication or if the medicine is stopped.

Date _____

Parent/Carer(s) Signature _____



Appendix 3

Record of medicine administered to a pupil

Child's Name	
Class	

Date	Time	Name of medicine	Dosage given	Any reactions	Administered by	Print name